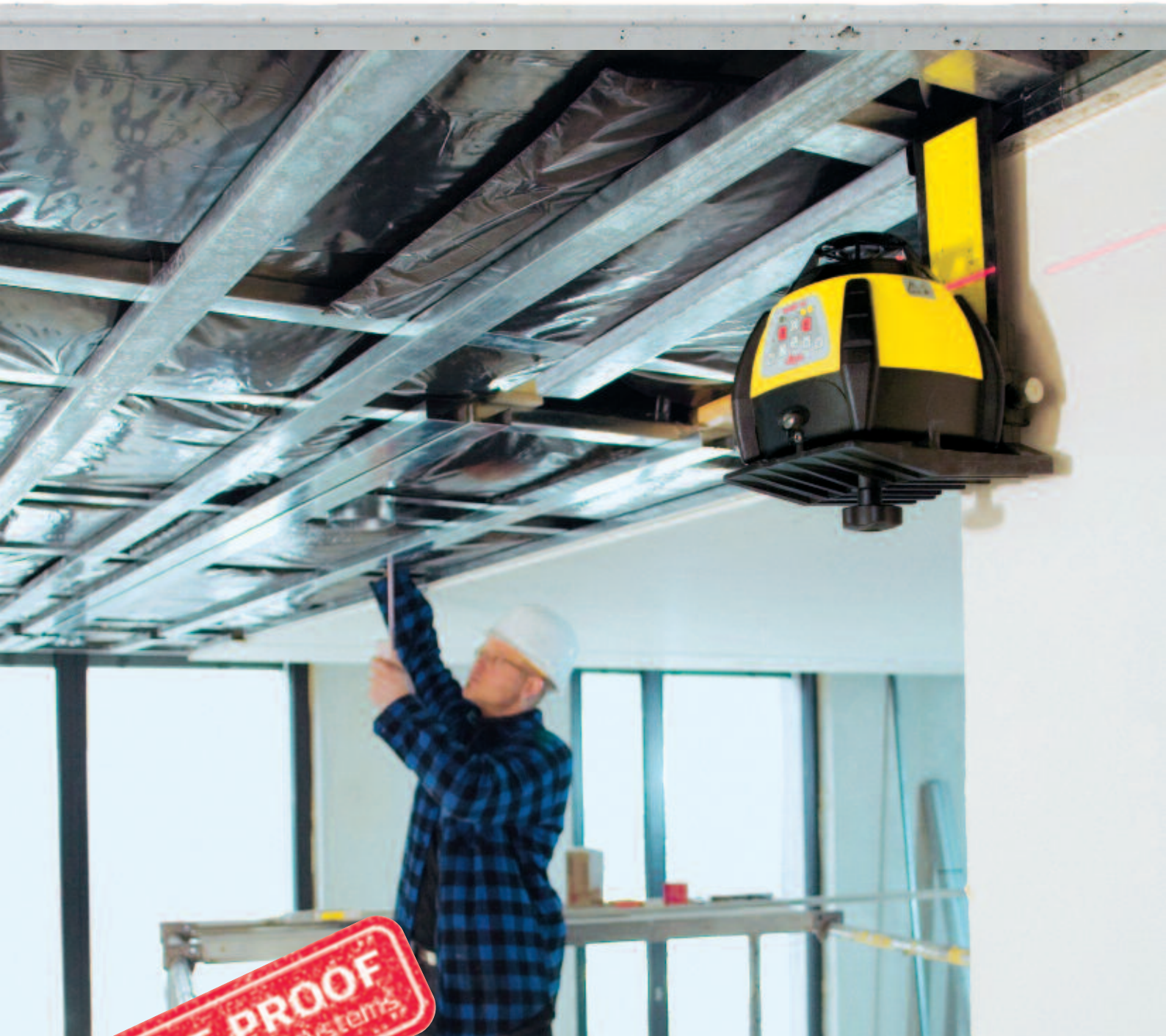


Leica Rugby 55

Designed for interior
Built for construction



SITE PROOF
by Leica Geosystems

- when it has to be **right**

Leica
Geosystems



Suspended Ceilings

With the Leica Rugby 55 mounted securely to the first piece of wall angle, set it to the desired height, adjust the ceiling grid using the laser beam on the target as the reference.



Floor Layout

Set up your Leica Rugby 55 over a control point using the unique Beam Down feature, then align the rotating or scanning beam to your second control point using the buttons on the Leica Rugby 55 or the remote control.



Square

The top plumb beam is always 90° to the main beam. Set up and align the Leica Rugby 55 to two control points, and the top plumb beam will provide an easy to use, 90° reference.

Leica Rugby 55 The Contractor's Choice

Rugged – Dependable – Accurate – Versatile

The Leica Rugby 55 provides today's contractor with the tools needed for virtually any leveling or alignment job. The Leica Rugby 55 features an easy to use keypad, a watertight seal, variable head speeds, selectable scanning modes, a bright red beam and alkaline or rechargeable battery pack.



Scan-90

With the Leica Rugby 55 the scanning or stationary beam can be quickly positioned in 90° increments ... making layout easier by quickly moving the beam to the left or right side of the Leica Rugby 55.



Beam Down Mode

By selecting zero rps with the head speed button, the rotating head automatically positions itself in a plumb down direction for alignment of the Leica Rugby 55 over a reference point.

Sleep Mode

Pressing the Up and Down buttons together on the remote will put the Leica Rugby into sleep mode for two hours to save battery life without disturbing your setup.



Level

The Leica Rugby 55 is fully sealed and provides an accurate reference for both interior and exterior leveling applications.



Interior Walls

Working with interior wall construction is made easy with the Leica Rugby 55's bright, red beam that provides a clear reference for layout as well as horizontal and vertical alignment.



Alignment

Mounted to a tripod, batter board clamp or setting on its own, the Leica Rugby 55 can be used for the alignment and squaring of forms.

**Ceiling grids – Floor layout – Raised access floors – Transferring points
Setting window supports – Cabinets – Interior walls – Tilt ups – Setting benchmarks
Elevation control – Footings and Foundations – Plumb – Manual slopes**



IR Remote Control

Adjustments to the Leica Rugby 55 are possible from virtually any direction using the full-function, infrared Remote Control.

Leica Rugby 55 Specifications

Operating Range (Rotating Beam)	300 m (1000 ft) Diameter
Operating Range (Plumb Beam)	up to 60 m (200 ft)
Self-leveling Accuracy*	±2.6 mm at 30 m (±3/32" at 100 ft)
Self-leveling Range	±5°
Rotating Speeds	0, 2, 5, 10 rps
Laser Diode (type)	635 nm (bright red)
Dimensions (HWD)	158 x 163 x 166 mm (6.2 x 6.4 x 6.5")
Weight with Batteries	1.85 kg (4.0 lbs)
Battery Type	Two D-cells or NiMH pack
Battery Life**	Alkaline: 50 hours; NiMH: 30 hours
Operating Temperature	-20 to +50° C (-4° F to +122° F)
Storage Temperature	-40 to +70° C (-40° F to +158° F)
Dust / water (IEC60529)	IP55

IR Remote Control

IR Remote Range	Up to 40 m (130 ft)
IR Remote Battery Life	Up to two years

* Accuracy is defined at 25° C

** Battery life is dependent upon environmental conditions. Specifications are subject to change without notice.

The Leica Rugby 55 Interior Package

A recommended package consists of the Leica Rugby 55, Carrying Case, Wall Mount Bracket, Remote Control, Ceiling Grid Targets (2) and either Alkaline or NiMH Battery Pack.



Register your product at www.leica-geosystems.com/registration to extend the warranty.



Whether you have to precisely layout a construction site, perform control measurements, collect height and angle data, align concrete forms, install ceilings and partitions, lay gravity flow pipe, locate underground services or complete site preparation and earthworks – Leica Geosystems offers the right instrument, construction laser or machine control installation specifically designed for your construction application.

Easy-to-use, jobsite tough, accurate and reliable – Leica Geosystems instruments and lasers ensure the efficient use of your materials and resources. High quality products, such as optical and electronic levels, construction lasers, total stations and machine automation systems, provide fast results, keep you working and increase your profitability.

When it has to be right.

Illustrations, descriptions and technical data are not binding. All rights reserved. Printed in Switzerland – Copyright Leica Geosystems AG, Heerbrugg, Switzerland, 2009. 758131en – XII.09 – RDV



Total Quality Management – our commitment to total customer satisfaction.

Ask your local Leica Geosystems dealer for more information about our TQM program.

R55-R (Art. No.: 753671):
Laser class 3R in accordance with IEC 60825-1 and EN 60825-1

R55-A (Art. No.: 754835):
Laser class IIIa in accordance with FDA 21CFR CH.1 § 1040



Leica Rugby 50
The one-button construction laser



Leica Rugby 100
The tough construction laser



Leica Rugby 100LR
The long range construction laser



Leica Rugby 320SG & 410/420DG
Single and dual grade construction lasers